



AMPLIFIKATION
Caliburn





**THANK YOU FOR CHOOSING A PRODUCT FROM KUASSA!
WE ENCOURAGE YOU TO TAKE THE TIME TO READ THIS USER MANUAL THOROUGHLY
TO ENSURE TROUBLE FREE AND PROPER OPERATION OF THE SOFTWARE.**

In the history of music, British made amplifiers has undeniable influence to the evolution of rock music. The loud, chimey clean, and thick crunchy mids of those amps were popularized by big acts such as Jimi Hendrix, Led Zeppelin, and The Who. It is the sound of rock music that lasts through generations until today. If there was only one name that represents the sound of rock music, it's absolutely this one: Marshall* Amplifiers. Founded by Jim Marshall in 1962, Marshall* amplifiers have taken the lead to be the top choice of many guitarists, such as Jeff Beck, Tom Morello, Andy Summers, Slash, Angus Young, Yngwie Malmsteen, to Kerry King of Slayer.

Following our extensive experimentation and never-ending quest to be the prominent guitar amplifier on your PC, now you can have the famous "British crunch" right from your personal computer. Powered by the 3rd generation of our research and development, Kuassa Amplifikation Caliburn brings the soul of the iconic sound to your desktop.

**Disclaimer :*

All trademarks are the property of their respective owners which are in no way associated or affiliated with Kuassa. The manufacturer names and model designations are used solely to identify the products whose tonal and sound characteristics were studied during development.

KEY FEATURES:

- 3 amp types, inspired by Marshall* JTM45, JCM800, and JCM900 Master Volume.
- 2 channels for each amp : Clean and Lead.
- NEW! Power amp Bias and Sag feature.
- NEW! Five types of cabinets with Celestion* speakers: G12T, Vintage 30, Greenback.
- NEW! Seven types of workhorse mics: Shure* SM57, Sennheiser* MD421, Sennheiser* MD441, C&T* Naked Eye, Royer* 121, AKG* C414, Neumann* TLM103.
- NEW! High pass and low pass filters.
- Freely adjustable dual-miking configurations with mono/stereo configurations just like a real-life guitar recording session with mix option.
- Built-in Noise Gate and Limiter.
- Photorealistic graphics for lifelike guitar playing experience.
- Straightforward and easy to use interface.
- Support up to 8x oversampling.



SYSTEM REQUIREMENTS

Windows:

Windows XP or Later (32/64 bit)

Intel Pentium 4, or AMD Athlon XP or better (Core2 Duo, Athlon64, or better is recommended) with 512MB minimum RAM

VST or VST3 compatible host/DAW

Pro Tools 10 or later for AAX format

Propellerhead Reason 7.1 or later for Rack Extension format

Macintosh:

Mac OSX 10.6 or later (32/64 bit)

Intel Pentium 4, or AMD Athlon XP or better (Core2 Duo or Athlon64 recommended) with 512MB minimum RAM

VST, VST3, or Audio Units compatible host/DAW

Pro Tools 10 or later for AAX format

Propellerhead Reason 7.1 or later for Rack Extension format

INSTALLATION

MAC OSX 10.6 OR LATER

Note for MacOS X users: you must be logged in to a user account with administrator privileges to run the installer.

For Mac installer(.pkg) format, double-click the installer and follow the instructions. The installer automatically point to your Mac's default VST/VST3/AU/AAX plug-ins path (see below). Alternatively you can customize the installation target to specific folder.

Here is the list of default folder installation path for each of our supported platforms in Mac OSX:

- Mac Audio Unit (AmplifikationCaliburn.component) : Library/Audio/Plug-Ins/Components
- Mac VST (AmplifikationCaliburn.vst) : Library/Audio/Plug-Ins/VST/Kuassa
- Mac VST3 (AmplifikationCaliburn.vst3) : Library/Audio/Plug-Ins/VST3
- Mac AAX (AmplifikationCaliburn.aaxplugin) : Library/Application Support/Avid/Audio/Plug-Ins

WINDOWS XP OR LATER

Note for Windows Vista, 7, or later: We recommend installation with Administrator rights using "Run as Administrator" for both Kuassa Installer and DAW installer.

For Windows Installer (.exe), double-click the installer and follow the instructions. The installer automatically point to your system's default plugins path (see below). Alternatively you can point the installation target to specific folder. Most VST host already have a "Plugins" or "VSTplugins" folder inside its installation directory, or you can point the host to read any folder you choose.

Here is the list of default folder installation path for each of our supported platforms:

- Windows 32-bit VST (AmplifikationCaliburn.dll) : C:\Program Files(x86)\Steinberg\VstPlugins\Kuassa
- Windows 64-bit VST (AmplifikationCaliburn.dll) : C:\Program Files\Steinberg\VstPlugins\Kuassa
- Windows 32-bit VST3 (AmplifikationCaliburn.vst3) : C:\Program Files (x86)\Common Files\VST3
- Windows 64-bit VST3 (AmplifikationCaliburn.vst3) : C:\Program Files\Common Files\VST3
- Windows 32-bit AAX (AmplifikationCaliburn.aaxplugin) : C:\Program Files (x86)\Common Files\Avid\Audio\Plug-Ins
- Windows 64-bit AAX (AmplifikationCaliburn.aaxplugin) : C:\Program Files\Common Files\Avid\Audio\Plug-Ins

UNINSTALLATION

MAC OSX 10.6 OR LATER

To uninstall from OS X, simply delete the plug-in located on the Plug-ins folder, and delete other file resources located at:
/Users/[YourName]/Music/Audio Music Apps/Kuassa/*/*

WINDOWS XP OR LATER

Use “Add/Remove programs” or “Programs and Features” from the Windows Control Panel. If Kuassa Amplifikation Caliburn were not listed, delete the .dll/.vst3/.aaxplugin file from your its installation folder (refer to previous section). Also delete other Amplifikation Caliburn file resources at ~\Documents\Kuassa**

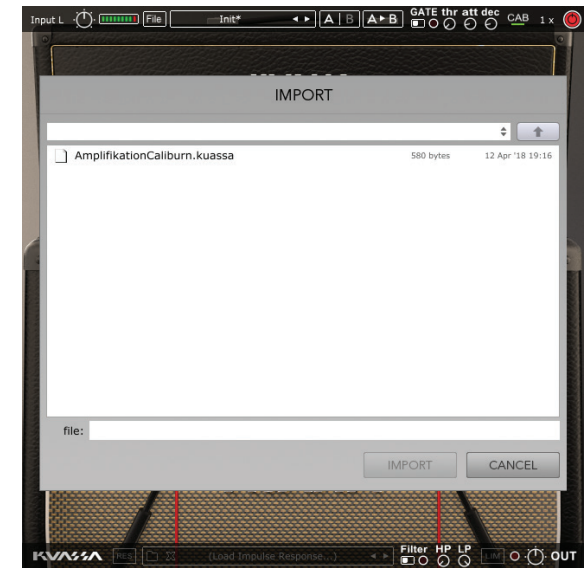
AUTHORIZATION



1 On evaluation mode, you will see this pop-up window when you first starting Amplifikation Caliburn.

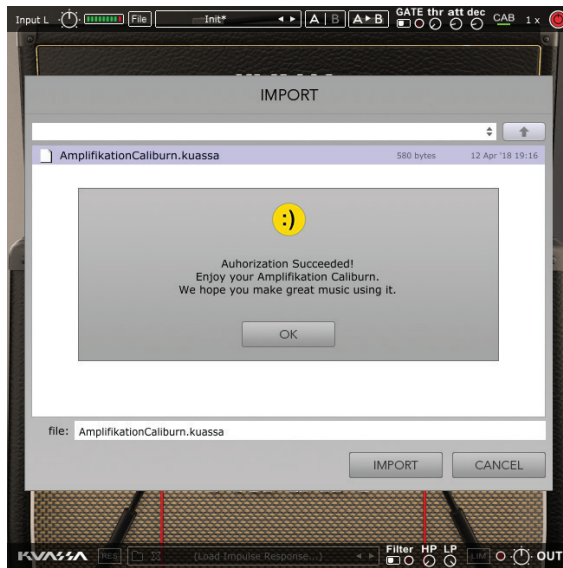


2 To start the authorization process, click the [File] button on the top-left of Amplifikation Caliburn Interface, there, you will find a selection box titled [Import License].



3 Locate the License File [AmplifikationCaliburn.kuassa] obtained from the confirmation e-mail sent to you after you purchase Amplifikation Caliburn from our web store. Note that the License File contains your personal information used to authorize Amplifikation Caliburn.

AUTHORIZATION (CONT'D)

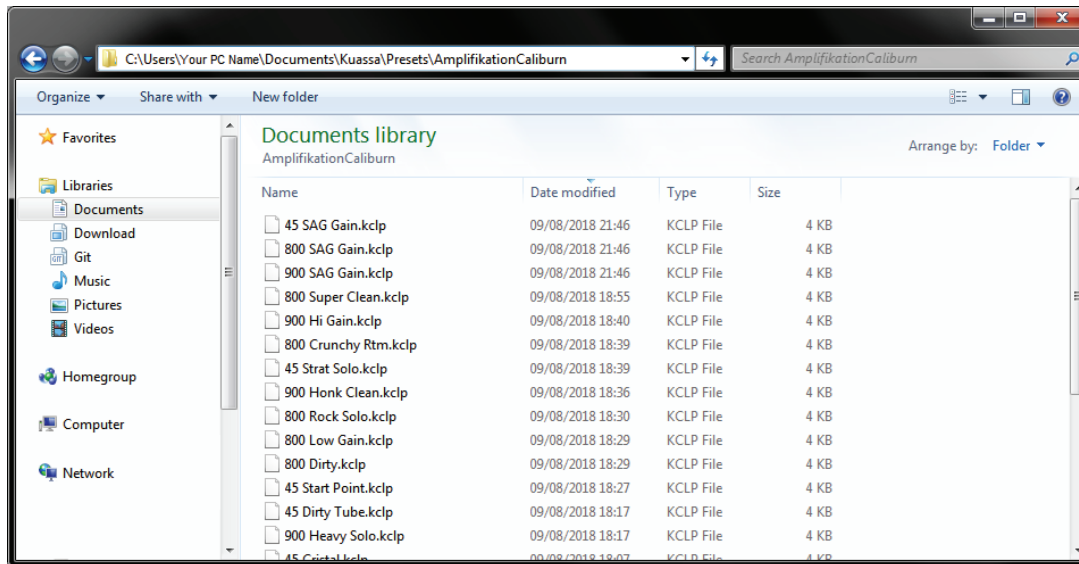


4 Right after you locate the License File, a pop-up box will appear confirming that you have successfully authorize your copy of Amplifikation Calburn.



5 To check if you have completed the authorization process, just simply load the About Box by clicking the Kuassa logo on the bottom-left corner. If you're authorization is successful, either your name or your e-mail address will be shown on the About Box. You will also notice that the generated noise on the Evaluation Version is now gone.

PRESET MANAGEMENT (1/3)



1

Presets for Amplifikation Caliburn Plug-in(s) are located in the following folders*:

- Mac: Users/[YourName]/Music/Audio MusicApps/Kuassa/Presets/AmplifikationCaliburn
- Win: ~\Documents\Kuassa\Presets\AmplifikationCaliburn

All presets inside these folders will be recognized by the plugin as individual presets, you can also create a folder to group the preset(s). They will thus be shown on the Amplifikation Caliburn Plug-in's preset selector.

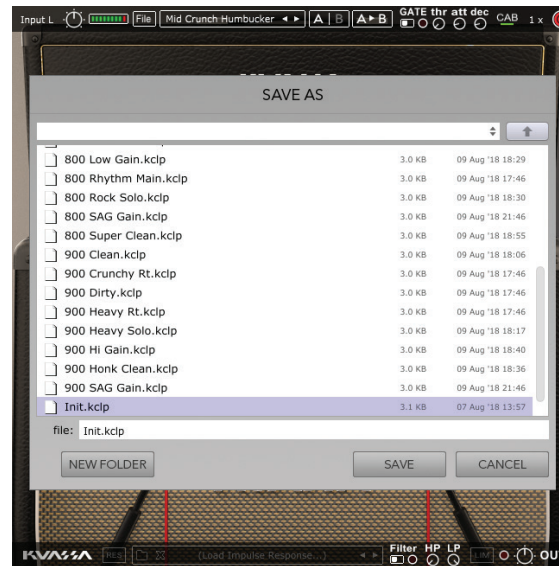
2

To save a preset, set your plugin to the desired parameter settings, then select:

- “Save Preset”: Overwrites currently active preset.

- “Save Preset As”: Saves current settings into a new preset file (*.kclp for Amplifikation Caliburn).

PRESET MANAGEMENT (2/3)

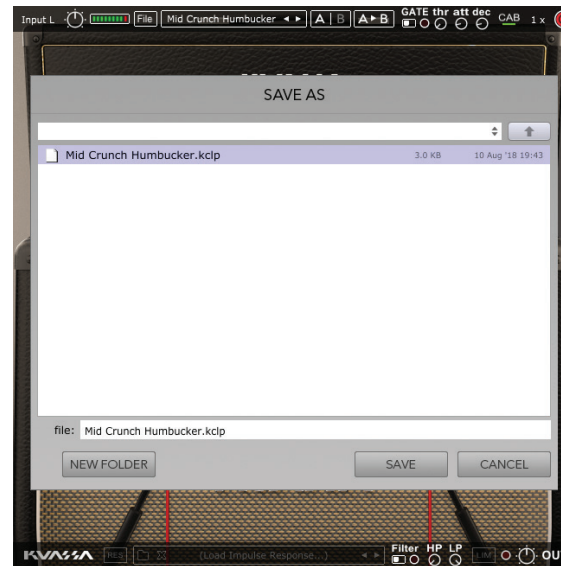


3 Keep "Lock Input Channel" checked to set the input channel selector remain unchanged when you change presets.

** Please note that toggling this option won't be saved as preset parameter.*

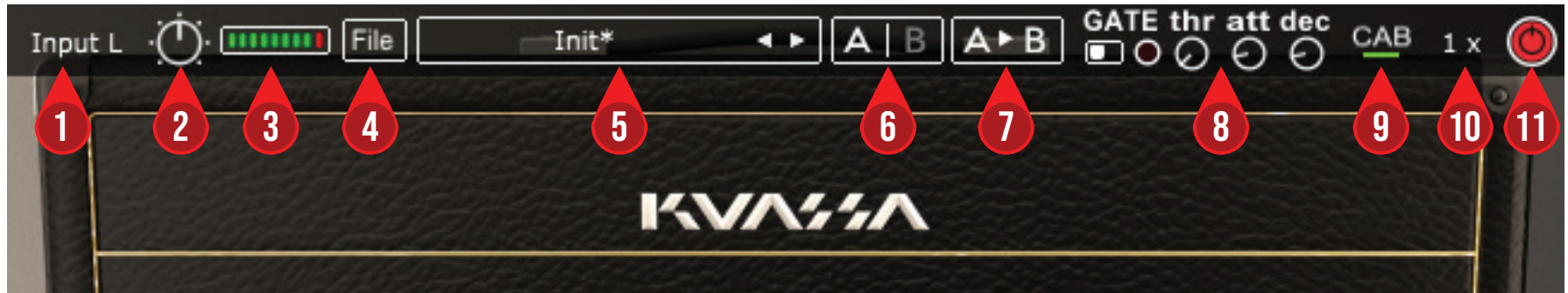
4 When you create a new preset using "Save Preset As...", make sure that you have chosen the correct preset folder as aforementioned on point 1 above to make sure that it will be recognized automatically by Amplifikation Caliburn plug-ins.

PRESET MANAGEMENT (3/3)



5 To add new additional preset banks, create a new folder by clicking "New Folder" button and rename it. Sub-folders are also recognized to manage presets into groups, useful to manage additional preset bank, or grouping presets based by their use.

INPUT FUNCTIONS



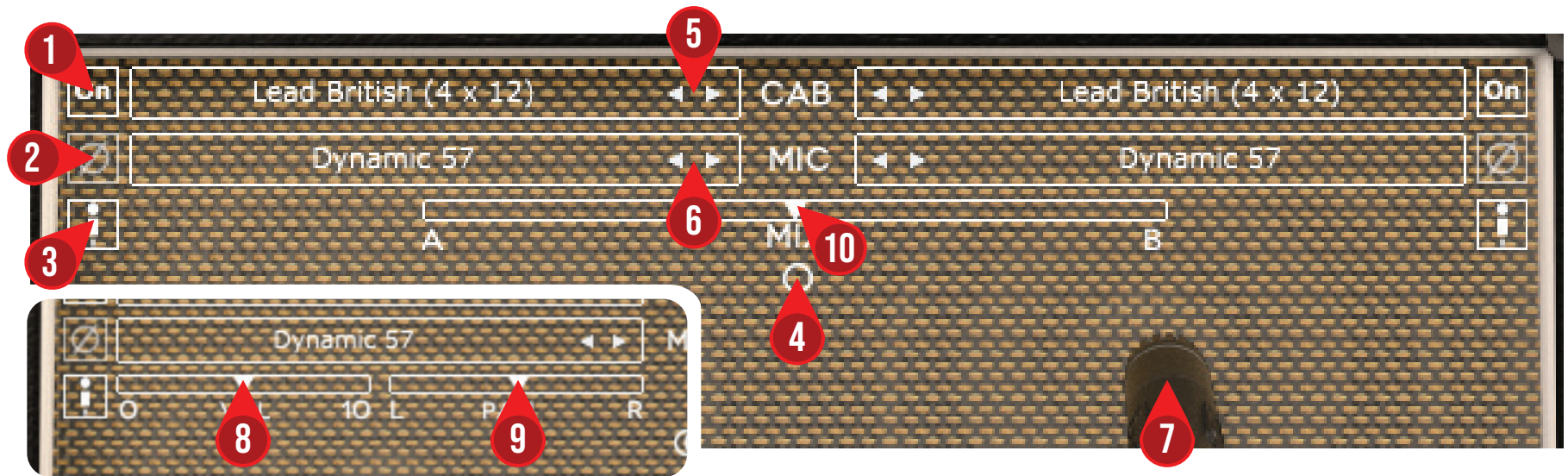
1. INPUT CHANNEL SWITCH : Click here to switch incoming input signal channel from your soundcard. L, R, Stereo, or Sum L+R can be selected.
2. INPUT LEVEL : Controls the level of incoming signal. You may turn it to the maximum without worrying of overloading the amp.
3. INPUT METER : Show the level from your incoming signal.
4. FILE BUTTON : Include option for following functions : Preset management/option, Plug-in license authorization and link to our website. Please refer to each corresponding section for more detailed how-tos.
5. PRESET SELECTOR: Click to choose preset or use the arrows to navigate between presets. The name of active preset will be displayed and (*) symbol will appear when edited.
6. A-B COMPARE : Compare two different settings of the Amp.
7. COPY A to B : Copy settings from the "A" state to "B" state, and vice-versa.
8. NOISE GATE PARAMETERS :
 - ON/OFF Switch : Enables or disables the noise gate.
 - THRESHOLD : Sets the minimum level where the Noise Gate will do its job. If the input signal level is below threshold, the noise gate will kick in by reducing the signal according to the Attack & Decay settings.
 - ATTACK : Controls how quickly the gate will open when the signal is above the threshold level.
 - DECAY : Determines how quick the gate closes once the signal has fallen below the threshold level.
9. CAB SETTINGS : Hide/Unhide Cabinet Section Parameters. Useful for distraction-free recording.
10. OVERSAMPLING : Increases the internal sampling frequency to reduce aliasing artefacts at the cost of higher CPU usage.
11. PLUGIN BYPASS BUTTON : Turns on or off the whole plugin.

AMP FUNCTIONS



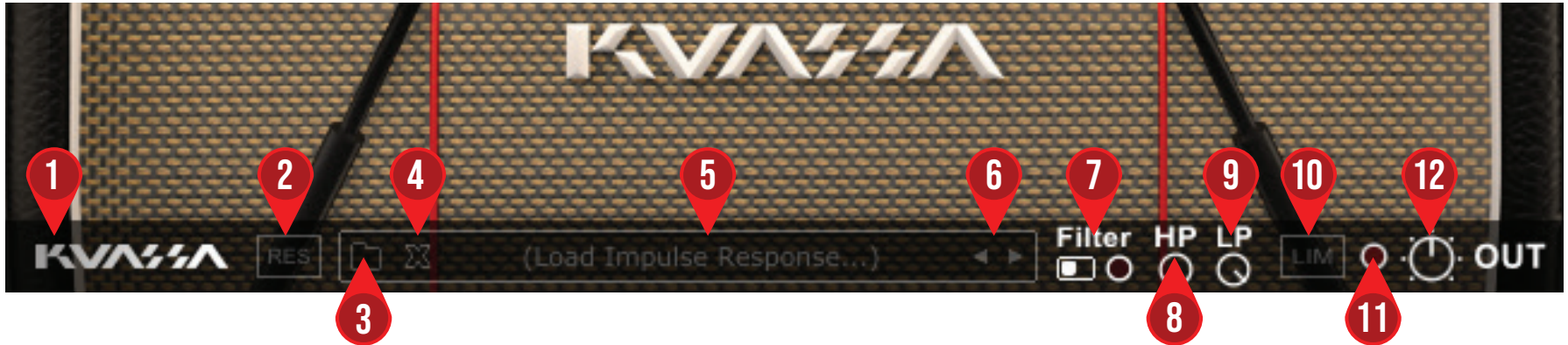
1. POWER : Turns the amp On or Off. If the amp is Off, the signal will be routed directly to the cabinets.
2. AMP TYPE A. JTM45 : Big, crunchy, and chimey.
B. JCM800 : Bold, fat, but still clear.
C. JCM900 : Heavy and dirty with long sustain.
3. CHANNEL : Select between Clean and Lead channel.
4. GAIN : Sets the input gain and the amount of distortion. Rotate clockwise for more distortion.
5. LOW : Adjusts the low frequency tone.
6. MID : Adjusts the middle frequency tone.
7. HIGH : Adjusts the high frequency tone.
8. PRESENCE : Adjusts the presence level of the amp.
9. BIAS : Sets the operating voltage of the power amplifier section.
10. SAG : Controls the amount of dropout/compression when a large signal and fast transient hits the power amp section.
11. MASTER : Adjusts the output level from the amplifier.

CABINET FUNCTIONS



1. CABINET ON/OFF BUTTON : Enables or disables the particular cabinet.
2. PHASE BUTTON : Inverts the waveform polarity.
3. MIC ANGLE : Switches between straight or angled miking.
4. MONO/STEREO SELECTOR : Use this to toggle between mono or stereo cabinet modes.
5. CABINET SELECTOR : Choose from 5 models of speaker cabinets.
6. MIC SELECTOR : Provides 7 types of microphone to use.
7. MIC POSITION : Indicates the position of the microphone. Move it freely with your mouse. Double-click to reset to center position.
8. CABINET VOLUME KNOB (🔊 Mode) : To adjust the volume of the corresponding cabinet. Parameter only shown in stereo mode.
9. CABINET PAN (📏 Mode) : To adjust the panning position of the corresponding cabinet. Parameter only shown in stereo mode.
10. CABINET MIX BALANCE (🔊 Mode) : Adjusts mix volume balance between the left and right cabinets. Double-click on the slider to reset to center position.

CABINET FUNCTIONS



1. KUASSA LOGO : Clicking on the logo will show the About box.
2. RES : Impulse Response RESAMPLE. When turned on, the loaded IRs will be matched to the host's sample rate.
3. LOAD IR : Browse into your IR (Impulse Response) Folder.
4. REMOVE IR : Remove or unload IR.
5. IR TITLE : Click this to open a list of available IRs on the a folder.
6. IR NAVIGATION : Navigate available IRs on a same folder.
7. Filter : Turn the filters On or Off.
8. HP (One pole High Pass) : Sets the center frequency of the high pass filter.
9. LP (One pole Low Pass) : Sets the center frequency of the low pass filter.
10. OUTPUT LIMITER : Enable or Disable the output limiter function. This will compress the sound to prevent overloading.
11. OVERLOAD INDICATOR : Will light up red when the audio signal overloads. Turn the OUT volume down, or enable the Limiter.
12. GLOBAL OUTPUT VOLUME : Adjusts the overall output volume from the plugin.



RACK EXTENSION



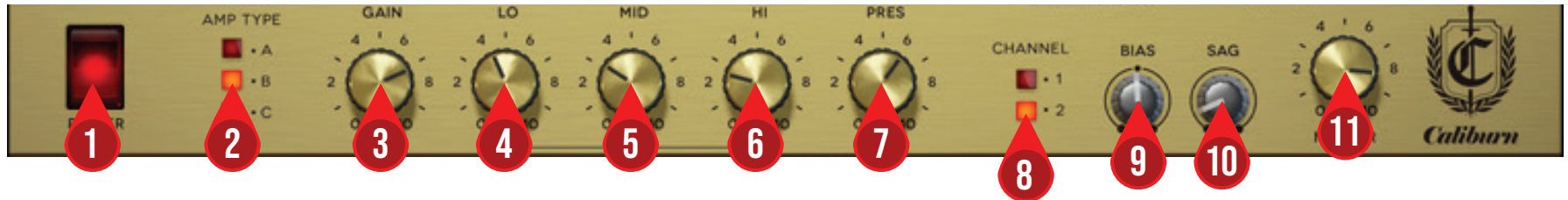
Rack Extension Renders by Mikko Niiranen

TOP PANEL FUNCTIONS



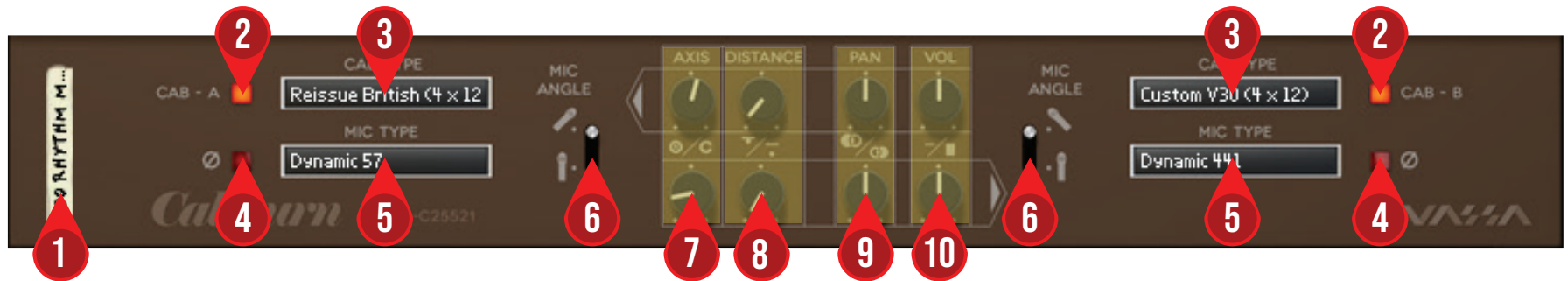
1. **PLUGIN BYPASS BUTTON** : Turns on, off or bypass the rack extension device.
2. **INPUT LEVEL** : Controls the level of incoming signal. You may turn it to the maximum without worrying of overloading the amp.
3. **INPUT METER** : Shows the level of incoming signal. For optimal result, make sure the level reaches about 70-80% just before red indicator starting to light up.
4. **PRESET BROWSER**
5. **PRESET NAME DISPLAY**
6. **NOISE GATE ON/OFF** : Enables or disables the noise gate utility.
7. **NOISE GATE PARAMETERS** :
 - **THRESHOLD** : Sets the minimum level where the Noise Gate will do its job. If the input signal level is below threshold, the noise gate will kick in by reducing the signal according to the Attack & Decay settings.
 - **ATTACK** : This controls the time how quickly the gate will open when the signal is above the threshold level.
 - **DECAY** : Determines how quick the gate closes once the signal has fallen below the threshold level.
8. **FILTER ON/OFF** : Turn the filters On or Off.
9. **FILTER KNOB PARAMETER** :
 - **HP (One Pole High pass)** : Sets the center frequency of the high pass filter.
 - **LP (One Pole Low pass)** : Sets the center frequency of the low pass filter.
10. **OUTPUT LIMITER** : Enable or Disable the output limiter function. This will compress the sound to prevent overloading.
11. **OVERLOAD INDICATOR** : Will light up red when the audio signal overloads. Turn the output volume down, or enable the output limiter.
12. **GLOBAL OUTPUT VOLUME** : Adjusts the overall master volume from the plugin.

AMP FUNCTIONS



1. POWER : Turns the amp On or Off. If the amp is Off, the sound will go directly to the cabinets.
2. AMP TYPE A. JTM45 : Big, crunchy, and chimey.
B. JCM800 : Bold, fat, but still clear.
C. JCM900 : Heavy and dirty with long sustain.
3. GAIN : Sets the input gain & the amount of distortion. Rotate clockwise for more distortion.
4. LOW : Adjusts the low frequency tone.
5. MID : Adjusts the middle frequency tone.
6. HIGH : Adjusts the high frequency tone.
7. PRESENCE : Adjusts the presence level of the amp.
8. CHANNEL : Select between Clean and Lead channel.
9. BIAS : Sets the operating voltage of the power amplifier section.
10. SAG : Controls the amount of dropout/compression when a large signal and fast transient hits the power amp section.
11. MASTER : Adjusts the output level from this amplifier.

CABINET FUNCTIONS



1. DEVICE NAME
2. CABINET ON/OFF BUTTON : Enables or disables each particular cabinet, A and B.
3. CABINET SELECTOR : Choose from 5 models of speaker cabinets.
4. PHASE BUTTON : Inverts the waveform polarity.
5. MIC SELECTOR : Provides 7 types of microphones to use.
6. MIC ANGLE : Switches between straight or angled miking.
7. MIC AXIS : Rotate clockwise to move mic position to edge of cabinet speaker, counter-clockwise to center.
8. MIC DISTANCE : Rotate clockwise to move mic position further from cabinet speaker, counter-clockwise for closer mic position.
9. CABINET PAN : Adjust the panning position of the corresponding cabinet.
10. CABINET VOLUME KNOB : Adjust the volume of the corresponding cabinet.

BACK PANEL FUNCTIONS



1. DEVICE NAME

2. CV INPUTS :

- CV Input Socket : Receive incoming CV message for controlling each of Amplifikasi Caliburn's CV control enabled parameters from another device's CV output.
- CV Input Trim : Turn counter-clockwise for each corresponding input to trim or reduce the intensity of incoming CV message.

3. OVERSAMPLING : Increases the internal sampling frequency to reduce aliasing artefacts at the cost of higher CPU usage.

4. Audio input and output sockets. Please note that Amplifikasi Caliburn Rack Extension is an "Effect" type unit, and should always be added as an Effect device instead of instrument.

MIDI CC NAMES (RACK EXTENSION)

INPUT

[128] = "/custom_properties/inputVolume",

NOISE GATE

[129] = "/custom_properties/gateOn",

[130] = "/custom_properties/gateThr",

[131] = "/custom_properties/gateAtt",

[132] = "/custom_properties/gateDec",

AMP

[132] = "/custom_properties/ampOn",

[133] = "/custom_properties/ampType",

[134] = "/custom_properties/ampChannel",

[135] = "/custom_properties/ampGain",

[136] = "/custom_properties/ampLow",

[137] = "/custom_properties/ampMid",

[138] = "/custom_properties/ampHigh",

[139] = "/custom_properties/ampPresence",

[140] = "/custom_properties/ampBias",

[141] = "/custom_properties/ampSag",

[142] = "/custom_properties/ampMaster",

CAB A

[143] = "/custom_properties/cabOnA",

[144] = "/custom_properties/cabTypeA",

[145] = "/custom_properties/micTypeA",

[146] = "/custom_properties/micPhaseOnA",

[147] = "/custom_properties/micAngledOnA",

[148] = "/custom_properties/micAxisA",

[149] = "/custom_properties/micDistanceA",

[150] = "/custom_properties/micPanningA",

[151] = "/custom_properties/micVolumeA",

CAB B

[152] = "/custom_properties/cabOnB",

[153] = "/custom_properties/cabTypeB",

[154] = "/custom_properties/micTypeB",

[155] = "/custom_properties/micPhaseOnB",

[156] = "/custom_properties/micAngledOnB",

[157] = "/custom_properties/micAxisB",

[158] = "/custom_properties/micDistanceB",

[159] = "/custom_properties/micPanningB",

[160] = "/custom_properties/micVolumeB",

OUTPUT

[161] = "/custom_properties/outputFilterOn",

[162] = "/custom_properties/outputHighpass",

[163] = "/custom_properties/outputLowpass",

[164] = "/custom_properties/outputVolume",

[165] = "/custom_properties/limiterOn",

Kuassa Amplifikation Caliburn Created by:

Muhammad Abduh

Intan Zariska Daniyanti

Iman Firman Amarullah

Juan Prahamma Hartjamt

Dimitar Nalbantov

Arie Ardiansyah

Raden Pratama Kusuma

Adhitya Sulistia Wibisana

Bramantyo Ibrahim

Cil Satriawan

Grahadea Kusuf

Iqbal Ansyori

Sundawan Sukmaya

Presets and Audio Demos by:

Dimitar Nalbantov (<http://www.nalbantov.com>)

KUASSA TEKNIKA, PT

Jl Sukasenang V No.14

Bandung 40124

West Java, INDONESIA

<http://www.kuassa.com>

General inquiry: info@kuassa.com

Technical support :
support@kuassa.com



A Product of KUASSA. Bandung,
West Java. Indonesia

© 2010-2018 PT Kuassa Teknika

Kuassa and Amplifikation Caliburn
are trademarks of PT Kuassa Teknika,
Indonesia.

All other commercial symbols,
product and company names are
trademarks or registered trademarks
of their respective holders.
All rights reserved.